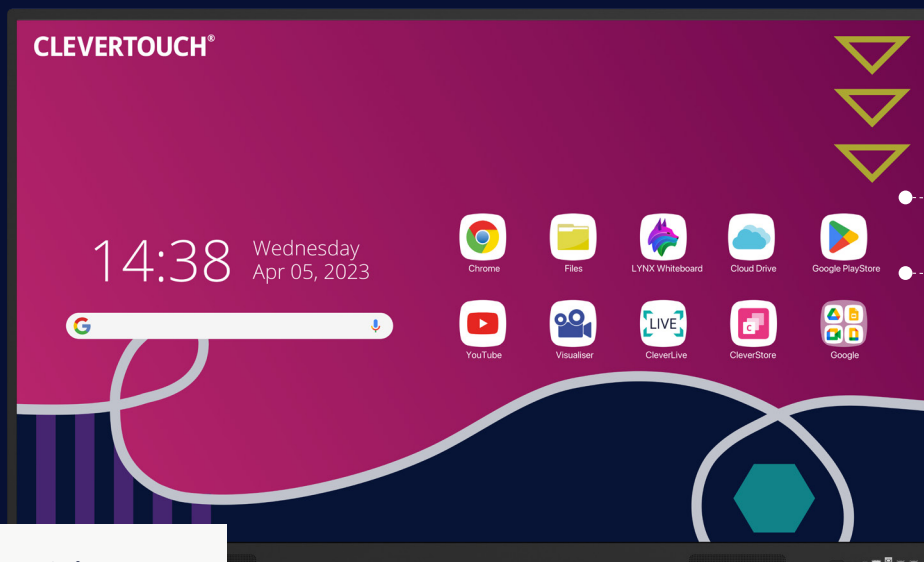


# Clevertouch X5

Delivering a truly intuitive and collaborative experience, X5 is an interactive screen with unlimited possibilities. Combines high-quality design, functionality, durability, native screen sharing and 4K resolution.



Android 14

EDLA Certified

Access the Google Play Store and Google Workplace, along with the full Microsoft 365 suite, directly from the screen. Use apps such as Google Drive, Docs, Sheets, Slides, Teams, Word and PowerPoint.

NEW

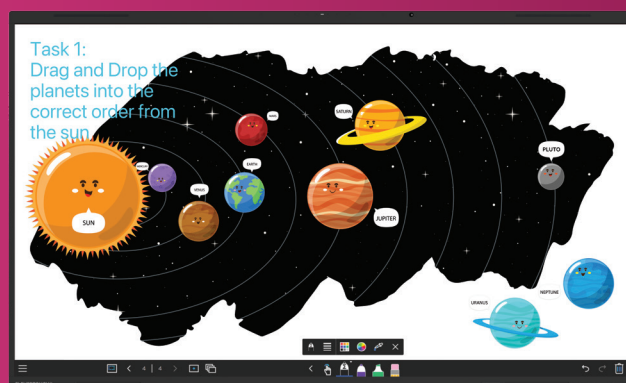


Available in a range of sizes  
65" | 75" | 86"

Software included at no extra cost



LYNX Whiteboard is a free-to-use lesson building app, enabling student collaboration. The most dynamic, intuitive user experience of any whiteboard



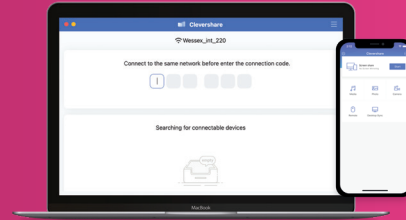
Software included at no extra cost



 **CLEVERMDM**<sup>®</sup>

Your IT team can control, update and troubleshoot a fleet of Clevertouch screens without entering the classroom, ensuring your teachers always have the latest versions of apps and software when teaching.

 **CLEVERSHARE**<sup>®</sup>



Any device can download the Clevershare app and connect instantly by typing in the code on the Clevertouch screen. Clevershare App is free to download and compatible with Android, Windows, iOS, and Chrome devices.

## Key Features



Our patented Super Glide Touch technology offers the most fluid writing experience



Never run out of space with our infinite whiteboard



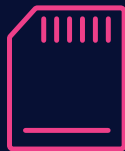
X5 is powered by Android 14



Clevershare screen mirroring allows you to share images, video and audio



Remote management MDM



8GB RAM  
64GB ROM



LYNX Whiteboarding made easy with a huge selection of pen & art tools to use



Cyber Essentials compliant



Connect your Cloud accounts to work from anywhere



Huge connectivity including one of the latest USB-C ports with charging ability



2 x high powered 20W speakers for crystal clear sound quality



# X5 Specifications

## Display Panel

Diagonal Size	65" 4K, 75" 4K, 86" 4K
Screen Type	TFT LCD module with DLED backlight
Aspect Ratio	16:9
Display Colours	1.07 Billion (10 bit)
DC dimming (for Flicker Free)	Yes
Resolution	3840x2160
Landscape / Portrait	Landscape
Response Time	<8ms
Refresh Rate	60Hz
LCD Viewing Angle	H = 178, V = 178 (Typ.)
Brightness	350 cd
Contrast Ratio	300nits (minimum) / 350nits (typical)
Dynamic Contrast Ratio	800:1 (Minimum) / 3000:1 (typical)
Glass Hardness	Tempered Glass - Mohs Level 7
Glass Thickness	3.2mm
Cover Glass	G15
Cover Glass - Light Transmission	88%
Haze	25%
Antibacterial Power Button	Yes
Main Board	MT9679 (SoC)
Operating Hours	7*16h
Frequency	60Hz
Backlight	DLED
NTSC	72%
Backlight lifetime	>30,000hrs (typical)
Light Sensor	Yes

## Interactivity

Writing Point (All Channels)	5-point with 3mm pen tip
Touch Solution	InfraRed
Touch Point	Windows: 40 points
Continuous Touch Points	40
Touch Resolution	32768x32768px
Response Time	≤10ms
Touch Accuracy	±1.5mm for 90% of screen area and ±2mm around 10% of the edges
Minimum Touch Objective	3mm
Writing Height	2mm
Level of Object Recognition	3 Levels
Bonding	Zero Bonding
Touch Tool	Finger, passive pen, opaque objects
Simultaneous Writing	Yes
Ink In Tools	Yes - LYNX
Pens Included	2
Touch Pen (Passive Pen)	2 x SW30
Pen Type	Dual Recognition Stylus   Super Cool Stylus 2.0
Pen Holder	Integrated magnetic pen holders
Pen Tip Diameter	3mm/7mm
Pen & Touch Differentiation	Yes

Pen Identities	2
Palm Rejection	Yes
Annotation Over Any Source	Yes
Classroom Essential Apps	Includes Whiteboard, Annotate, Timer, Media Players, Browser, PDF Reader, Screen Record, Spinner, Voting, Maths Tools
Compatibility*	Windows 10, Linux, Mac, Android, Chrome
Tracking Rate	10m/s
Scan Rate	100Hz
Gestures & Edge Swipes	Windows Supported, OSX With additional Driver

## Connectivity

OPS Slot	1
HDMI In	3 x HDMI 2.0, (1 x front, 2 x rear)
Additional HDMI OUT port	Optional
USB Touch (type B)	2
USB 2.0	2 x (rear, 1 x Android)
USB 3.0	3 x (2 x front + 1 x rear)
USB Type C (Video, Audio & Touch)	15w when ops plugged in
Touch Out Type-B (USB2.0)	3 x (1 x front, 2 x rear)
Display Port In	1
VGA In	1
LAN In (RJ45)	1 (Speed: 10/100Mbps)
LAN Out (RJ45)	1 (Speed: 10/100Mbps)
RS-232	1
Wake-on-Lan	Yes
Wireless Adapter	Yes
Clevertouch WiFi Module	WiFi6/WiFi 6E
Bluetooth	Yes - 5.0
Audio In	1 (3.5mm)
Optical Out	1
Headphone	1 (3.5mm)
SPDIF	1
TF Card Slot	1
NFC Reader / Writer	Optional Extra
Camera	Optional Extra
WiFi	802.11ac, 802.11n, 802.11g, 802.11b, 802.11a, 802.11ax
WiFi Speed	Capable of speeds up to 433Mbps

## Computing

Operating System	Android 14 (EDLA Certified)
System Version	Lux 14
RAM	8GB
Internal Storage	64GB
Type	eMMC
CPU	Quad Core A73"

## X5 Specifications

<b>SoC</b>	MT9679 (ARM Cortex-A73*4)
<b>GPU</b>	Mali G52MC1
<b>Android Resolution</b>	4K
<b>Integrated Lux UI</b>	Yes
<b>System Architecture</b>	64-bit
<b>Google Certification</b>	EDLA Certified (Enterprise Device Licence Agreement)
<b>Access to Google Playstore Apps</b>	Yes (certified)
<b>Access to Microsoft Apps</b>	Yes (certified)
<b>Access to Google Cloud Services</b>	Yes (certified)

## Power

<b>Power Adapter</b>	100-240VAC +/- 10% Wide Range
<b>Power Requirements</b>	100-240V ~ 50/60Hz
<b>Power Consumption (Standby)</b>	≤0.5W
<b>Ultra Quiet Fanless Design</b>	Yes

## Operating & Storage Environment

<b>Operating Temperature</b>	0° to 40°
<b>Storage Temperature</b>	-20° to 60°
<b>Operating Humidity</b>	10% to 90% RH
<b>Storage Humidity</b>	10% to 90% RH
<b>Altitude</b>	Below 5000 metres

## Audio

<b>Speaker Capacity</b>	2x20W
<b>Audio Out</b>	Yes
<b>SPDIF / Fibre</b>	Yes
<b>Sound Channel</b>	2

## X5 Built-In Features

<b>LYNX™ App With Online Lesson Planning</b>	Yes
<b>Clevershare™ Mirroring Any Device To The Board</b>	Free for the life of the screen (touch back)
<b>Integrated Personalised Account Profiles</b>	Yes
<b>Cloud Account Access</b>	OneDrive, Google Drive
<b>Whiteboard Annotation</b>	Yes
<b>Email Out Direct From Touchscreen</b>	Yes
<b>Scan QR Code For Saving Work</b>	Yes
<b>Remote Management Of Touchscreens (MDM)</b>	Yes - One year license

## Physical Spec

<b>Panel Dimensions</b>	<b>65"</b> 1488 x 897 x 87mm <b>75"</b> 1709 x 1020 x 88mm <b>86"</b> 1957 x 1160 x 100mm
<b>Packed Dimensions</b>	<b>65"</b> 1628 x 208 x 1005mm <b>75"</b> 1863 x 225 x 1140mm <b>86"</b> 2110 x 255 x 1283mm
<b>Net Weight</b>	<b>65"</b> 34.95kg <b>75"</b> 47.30kg <b>86"</b> 58.55kg
<b>VESA Mount Point</b>	<b>65"</b> 600 x 400mm <b>75"</b> 800 x 400mm <b>86"</b> 800 x 600mm

## Inside your Clevertouch Box

<b>What's In The Box</b>	(1) Clevertouch X5 (2) SW30 Touch Pen (1) 1.5M Length HDMI Cable (1) 3M Length USB cable (A-B) (1) 3M USB C Cable (1) 3M Regional Power Cable (1) Remote Control (2) Batteries for Remote Control (2) Dual Recognition Stylus (1) User Guide (1) Quick Start Guide (1) Wireless Adapter 2.0 + WAP
--------------------------	--

## Warranty

Warranty term and upgrade options vary by region. Contact your local reseller or distributor for information and visit [clevertouch.com/about/warranty](http://clevertouch.com/about/warranty)

## Compliance & Certification

<b>Regulatory Certification</b>	CE, FCC, UL, Energy Star & EEC
---------------------------------	--------------------------------



## Statement

Size and weight vary by configuration and manufacturing process, please refer to the actual product. The product images are for illustrative purposes only and may slightly differ in appearance, colour, size, etc. from the actual product. The description, illustrations, etc. in this document may subject to change in accordance with the latest product specification and performance. Should the above-mentioned change in the document become necessary, the document may be updated without written notice.